

Dear Parishioners

The Bishops of England and Wales have printed a special card to mark Pope Benedict's retirement from the Petrine ministry and to encourage prayer for him. These are available at the back of the church.

It was proposed and agreed at the recent Forum that St Michael and St John's church in partnership with our school raise money to buy a *Defibrillator* (in a layperson's terms, a heart start machine). Healthy people, including children, can suffer a heart attack or other form of heart arrest. (I'm told that three people have collapsed and died in or near the church during the past 40 years. In the first parish I served, a parishioner whom I knew died suddenly in church only a couple of weeks ago.) A *Defibrillator* costs over £1,000 but Mark Evans a parent at the school who is also a paramedic is able to purchase one for £800 and is prepared to instruct all parishioners who wish to learn to operate it. So there will be a voluntary retiring collection after Masses next Sunday and the school is to arrange further fundraising. Cheques should be made payable to 'Our Lady of the Valley Parish'.

And while on the topic of money: the parish has paid the property insurance premium for our buildings in both Clitheroe and Sabden. Because all our property is either listed or in a conservation area the premium is a hefty £9,802.42!

The Finance Committee to meet in March and will afterwards present accounts to the parish.

Next week our First Holy Communion children receive the Sacrament of Reconciliation (First Confession) in Clitheroe at 7.30pm on Tuesday 12th March and in Sabden the following day, Wednesday 13th March, also at 7.30pm. Fr Wareing will help on both occasions. Parents and parishioners are invited to receive the sacrament with our children.

As last year, a book will be placed at the back of St Michael & John's to inscribe the names of deceased family and friends in each of whose memory you wish to donate £3 to purchase a lily towards providing a magnificent display of lilies to enhance our Easter celebrations.

Year of Faith groups meet tomorrow at Bernard Warren's 10 Claremont Ave at 2pm and on Tuesday in the Presbytery at 2.30pm

Finally, I trust that each and every one of us has chosen to do something for Lent?

Fr John

Parish of Our Lady of the Valley

Catholic Communities of Clitheroe & Sabden

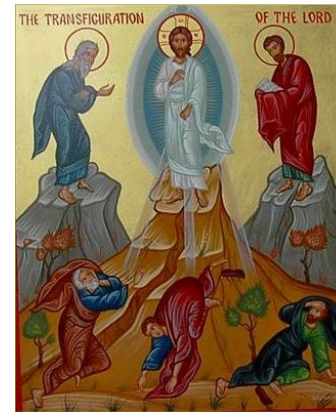
Lowergate, Clitheroe, Lancs BB7 1AG

Tel 01200 423307 website: olotv.org.uk

Email: smsj@btinternet.com Parish Priest: Mgr John Corcoran RD

2nd Sunday in Lent (C) - 24th February 2013

St Michael & St John's Church, Clitheroe



Sunday

Mass at 9.30am followed by coffee

Monday

Eucharistic Service at 9am

Tuesday & Wednesday

Mass at 9am

Thursday

Mass at 7.30pm

Friday

Eucharistic Service 9am
Stations of the Cross 7.30pm
Women's World Day of Prayer -
Trinity Methodist Church 7.30pm

Saturday (2nd March)

11am - 11.55am Exposition 11am - 11.45am Reconciliation (Confession)
11.30am Rosary 12noon - Eucharistic Service 6pm First Mass of Sunday (quiet)

St Mary's, Sabden

Sunday - Mass at 11am

Tuesday - 7.30pm Stations of the Cross **Friday** - Mass at 9.15am

Saturday (2nd March) - Wedding at 3pm

MASSES RECEIVED THIS WEEK

Carol Turner x 4, Mary Reid, Special Intention, Marie Thornber, Rae Carter,
Special Birthday, Margaret McKenna, Stella Mason x 2

SICK

Sally Hickling, Maria Middleton

LATELY DEAD

Rae Carter, Stella Mason, Fr Fred Watson,

ANNIVERSARIES

Carol Turner, Mary Reid, Marie Thornber, Wilfred Clegg

OFFERTORY Clitheroe £815.97 Sabden £161.18 Many thanks

APF MISSION (RED BOXES) St Michael & St John's - £677.41 Many thanks

CATHOLIC SINGLES is an organisation which helps single adult Catholics of all ages meet, either one to one or through social events. Please tel. 0161 941 3498, visit the website www.catholic singles.org.uk or email info@catholic singles.org.uk

CAFOD Hope to see you at the Hurst Green Memorial Hall to-day where we will be running a stall at the Flea market. Open 9am - 4pm, refreshments available all day, come and browse. Fairtrade Fortnight starts to-morrow, Monday 25th February until March 10th - remember to look out for the logo on your purchases

CLITHEROE

SOCIAL CENTRE Sunday evening In addition to the usual Quiz on a Sunday evening is 'Play your Cards Right'. Please come along - Everyone welcome

The Social Centre is now open through from 12noon on Saturdays & Sundays

CEILIDH Saturday 16th March 'Dogsbody Band' - (6 piece with caller) Tickets £10 inc Light Supper. Ring Kevin at Social Centre for tickets

ROTARY CLUB CLITHEROE - Swing Band Night in St Mary's Parish Hall (Clitheroe) 2nd March - See poster in porch

BROWNIES St Michael & St John's 4th Clitheroe Brownies are looking for Unit leaders to take over from Easter. The unit has 24 little girls who are all fabulous! The little ladies enjoy meeting up during term time on Tuesday evenings in Clitheroe. If you would like to know more about becoming a unit leader or helper please email Rachel@gofirebird.co.uk

WOMEN'S WORLD DAY OF PRAYER - NEXT Friday 1st March 7.30pm at Trinity Methodist. This year the service has been prepared by the Christian Women of France. Everyone Welcome including men, women and young people but not suitable for children. All the Christian Churches in Clitheroe will take part in the service.

LENT TALKS Next Saturday 1st March in our Parish Hall at 11am (Tea/Coffee served at 10.30am) the talk this week - 'Clitheroe Healing Rooms' with Janet Murdoch, Vicky Dowd and Janet White. See poster in porch. There are also Lenten talks being held at Stonyhurst to which we are all welcome - see poster in porch or pick up a flyer which are also available from porch

K.S.C. DANCE Friday 1st March in our Parish Hall at 7.30pm. Dancing to John Lancaster. Tickets £6 inc supper. Tickets Les 01200 427029 Arnold 01200 427096

SAINSBURY'S VOUCHERS Once again our Primary School are collecting Sainsbury's Active Kids vouchers. Please hand into school or pop in the parish communications box in church porch

LADIES GROUP TRIP Wednesday 1st May to The National Arboretum in Staffordshire followed (time permitting) by a visit into Lichfield. Departs 8.20am from Interchange. Cost approx £25 which includes Coach fare, Guided tour around Arboretum and Lunch (Roast of the day plus a sweet) and a tip for the driver. Names to Janet or Daphne please - only 6 places left. Please note the trip on December 4th to Manchester and the BBC Studio Tour is fully booked, but you can go on the waiting list - ring Janet 01200 424657 or Daphne 01200 427912

EASTER REMEMBRANCE BOOK will be available from 2nd/3rd March for you to donate a Lily for Easter as was the case last year. More information next week

ROTAS NEXT WK	Saturday	Sunday
Welcomers	A.Harkin	S.Shore & M.Rogers
Reader	C.McGuire	P.Donnely
Eucharistic Ministers	F.Ellis & Volunteer	C.Leeming, J.Leeming, R.Embery
Tea & Coffee		M.Anwyl & G.Lambert

LADIES GROUP NEXT Wednesday February 27th at 7.30pm in our Parish Hall. 'From Barrister to Beekeeper' - Lancashire farmer Craig Hughes, will speak on his passion for beekeeping. We invite both ladies and gents to come to this event. A very interesting talk, only £2 including Tea and Biscuits. *** At this meeting there will be a second hand book sale.*** Do come along and join us.

PARISH DRAW - FEBRUARY WINNERS £100 39 M.Seddon, £25 242 Mrs D Hutchinson, £10 - 244 P.Worswick, 285 A.Metcalf, 273 P.Humphreys, 243 E.Worswick, 228 J.Wharton. Please collect your prize from your agent

PRO-LIFE DAY OF PRAYER will be held on Saturday 16th March. Exposition from 9am - 5.45pm, with Mass at noon. List of times for 'watchers' before the Blessed Sacrament can be found at the back of church. Please try to come for half an hour. During Mass at 12noon children who have died at an early age or before birth will be included in the special intentions. Please use the slips of paper provided on which to write the Christian name of your child, then place it in the basket provided, situated on the table where repository items are for sale.

SABDEN

BONUS BALL 49 Betty Brown

ST MARY'S PRIMARY SCHOOL collect batteries and Nestle cereal tokens. Please hand in at school or in the container in porch

DATES FOR YOUR DIARY 21st March - Bingo in the Hall at 7.30pm. Admission £5 inc book of tickets and refreshments. Come along and enjoy a great social evening. **ST GEORGE'S DAY** Celebration in memory of Raymond who would have been 80 on 20th April. **Details to follow.** **ANTIQUES & COLLECTABLES DAY** Sat 13th April. An expert from a local auction house will value items at the cost of £1 per item. This promises to be an exciting and fun event. More details later.

WOMENS WORLD DAY OF PRAYER Friday 1st March 2pm Sabden Baptist Church

RED BOXES (APF MISSIONS) are now due, please bring with you to church next time you come. Please make sure your name and address is written on the label on the box

WANTED

Volunteer cleaners for St Mary's Church and Hall in Sabden.

There a number of teams and so the work is spread.

We are looking for more volunteers to help, especially as one of our teams is retiring at Easter. If you could spare a couple of hours once a month please

contact Jennifer Mead
01282 770702

